

Badger Lodge News

Newsletter for United Lodge 66, Machinists Union, AFL-CIO

Chartered: November 30th, 1895

Vol. 27 No. 3

www.unitedlodge66.org

March 2025

United Lodge 66
Business Meeting
March 11th at 7:00 PM
1650 S 38th Street
Milwaukee, WI 53215
414-671-3800
All lodge members are encouraged to attend

Contents:

Pages 2 & 3: Past Sacrifices, Future Victories

Page 4: Why a Story About Iowa State Council?

Pages 5 & 6: There's Still Time to Fund an IRA for 2024

Page 7: Seniors Corner: 71 percent of Trump Voters Oppose Medicaid Cuts

Page 8: Contact Information

Office Hours:

By appointment only. Call 414-671-3800 or email lodge66@gmail.com

All Contract issues must be settled by your Business Rep at District 10. *See Last Page*

International President Bryant Joins Iowa State Council for Discussion on Legislative Battles Ahead

From goiam.org

Delegates from Iowa IAM Locals convened at the IAM District 6 office to discuss the political climate and upcoming legislative battles the union is taking up in the state and beyond.

IAM International President Brian Bryant and Midwest Territory General Vice President Sam Cicinelli joined the delegation and gave remarks to motivate the group of political activists for imminent policy threats to workers and IAM members.

“Regardless of party affiliation, it’s going to get downright scary,” said Bryant. “We can’t afford to sit on the sidelines, and we must continue to communicate with and educate members and families about the issues that affect us in every election.”

Bryant was adamant about supporting candidates that will support IAM members, no matter what side of the aisle they’re on.

“Unfortunately, I could not find anything from one of these executive orders that the current President of the United States has signed that will benefit workers or IAM members,” said Bryant.

Bryant also covered wins the union has fought for and their importance, not just legislatively but as an organization that is putting members first.

“Concentrating on who’s really important to our union, and that’s our membership, the IAM offers more programs for our members and their families than any other union in the entire labor movement,” said Bryant before highlighting the achievements of the IAM William W. Winpisinger Center, Veterans Services, Critical Incident Response Training, Employee Assistance Program and Addiction Services, Human Rights Department, Disaster Relief, and Retirees.

See ‘Legislative Battles’ on pg. 4

Past Sacrifices, Future Victories: Triangle Shirtwaist Factory

Fire

When we started this segment the goal was to cover lesser known labor history events, ones that don't garner as much attention. The Triangle Shirtwaist Factory Fire was not on the list given the fact it is one of the deadliest industrial accidents in American History and the numerous books written about it. However, given the current state of politics here in the United States and our recent visit to the site of the fire and memorial during the 41st Grand Lodge Convention, now feels like the perfect time to cover it.



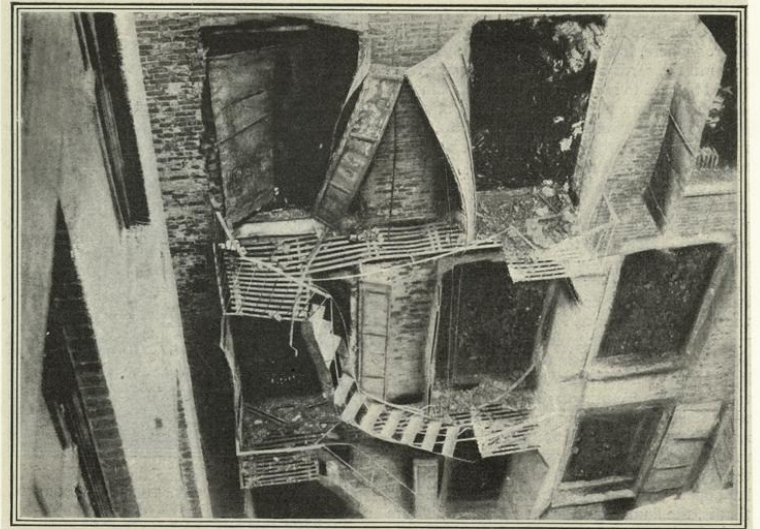
The tragedy happened on March 25th at The Triangle Waist Company, which occupied the 8th and 9th and 10th floors of the then named Asch Building. The company employed a lot of immigrant women and children of Italian and Jewish descent, quite simply it was a sweat shop. The company employed roughly 500, worked them 9 hours a day during the week and 7 hours on Saturdays and they paid between \$7 and \$12 a week for their 52 hours of work.

The fire took place on a Saturday at the shop, around 5 pm. It is said to have started from a flare up from a scrap bin by a discarded match or cigarette. There has also been speculation of arson as there was a pattern of fires in the garment making industry that allowed the business owners to collect insurance money. The workers were trapped on the upper floors as the doors were locked to keep the workers in, and union organizers out. One of the managers who had a key was reported to escape the fire and not return to unlock them as he had reached

safety for himself.

There were 2 staircases to the 8th, 9th and 10th floors and the city allowed the construction of 1 exterior staircase in lieu of constructing a 3rd staircase. The external fire escape may have been damaged before the fire started but it was poorly constructed and eventually collapsed as the workers tried to escape. Elevator operators were able to make 3 trips to bring workers to safety but eventually the tracks began to warp and buckle with the heat of the fire, leading workers to pry the elevator doors open to try and slide down the cables or jump to the elevator car below. Workers also resorted to jumping from the windows to try escaping the flames.

Witnesses recounted the scene, with reporter William Gunn Shepherd saying "I learned a new sound that day, a sound more horrible than description can picture—the thud of a speeding living body on a stone sidewalk." Louis Waldman, a labor lawyer and later a New York assemblyman said "Word had spread through the East Side, by some magic of terror, that the plant of the Triangle Waist Company was on fire and that several hundred workers were trapped."



THE ONLY FIRE-ESCAPE ON THE ASCH BUILDING. IT HUNG IN A CLOSED COURT WHICH WAS FULL OF FIRE IN A FEW MOMENTS. BY THIS FIRE-ESCAPE IT WOULD HAVE TAKEN THREE HOURS TO EMPTY THE THREE UPPER FLOORS OF THE BUILDING
McClure's Sept 1911 Triangle Fire

Continued on next page

Waldman continued “Horrified and helpless, the crowds – I among them – looked up at the burning building, saw girl after girl appear at the reddened windows, pause for a terrified moment, and then leap to the pavement below, to land as mangled, bloody pulp. This went on for what seemed a ghastly eternity. Occasionally a girl who had hesitated too long was licked by pursuing flames and, screaming with clothing and hair ablaze, plunged like a living torch to the street. Life nets held by the firemen were torn by the impact of the falling bodies.”

In total, 146 workers died that day, as young as 14 and as old as 43 years old. They did not die in vain as this event sparked a revolution in workplace safety as well as union organizing in the United States. The city of New York formed a committee on public safety and the state formed The Factory Inspection Commission which resulted in the New York City fire chief concluding that he found around 200 more facilities in the city alone that would be at risk of a similar tragedy.



‘Legislative Battles’ from pg. 1

“Our union is strong, is sound, and is getting stronger every single day, sisters and brothers,” said Bryant. “We are winning industry leading contracts in all of our sectors, and we continue to grow and organize in both our traditional, but also in non-traditional industries,” said Bryant.

Cicinelli covered in-depth what measures have been taken on the political stage that are threatening IAM members and workers in general, citing recent actions by the executive branch.

“The President has effectively shut down the National Labor Relations Board’s operations, leaving the workers it defends on their own in the face of union-busting and retaliation,” said Cicinelli. “These moves will make it easier for bosses to violate the law and trample on workers’ legal rights on the job and fundamental freedom to organize. ”

Iowa Federation of Labor President Charlie Wishman thanked the State Council for their powerful work and support.

“There’s one union I know that we can call on and count on, and that’s the Machinists Union,” said Wishman. “We are the ones that stand up to the bullies. That’s why you’re here. We stand up to the bullies and the billionaires.”

Iowa State Council President Gary Pickett presided over the meeting and led members to elect their executive board before Bryant swore-in the newly elected officers to their positions on the Council.

Why a Story About the Iowa State Council?

Opinion by Jon Zancanaro

I don’t like to use the word “I” when publishing or writing stories for The Badger Lodge News, however I wanted to share our Internation President Brian Bryant and General Vice President of The Midwest Territory's remarks in this publication given the struggles we are facing and embracing given the current state of politics in our country. This is an important but contentious topic that is tread on lightly here as we recognize our members have differing opinions on the current president.

That being said the above statements hit the nail on the head at the Iowa State Council. As a labor organization we need to elect representatives that will work with us in passing legislation that improves workers safety, working conditions and economic well being. In just 6 weeks under Donald Trump’s 2nd term we’ve witnessed the opposite.

Sure, he’s proposed no taxes on tips and overtime but at what cost: cuts to Medicaid and adding at least 2.8 trillion to our already high national debt. What will that leave us at the end our working careers as many of us will look to retire and live out our golden years?

We have said in this publication before that elections have consequences and just as we saw difficult times under Trump’s first term, we are bracing for another difficult time under his second as a labor organization. That does not mean we should stand back and do nothing. On the last page of every Badger Lodge News is a directory of our representatives not just here in Wisconsin but also our Elected representatives to the United States Congress. Reach out to them and remind them they are working for us, that we deserve a seat at the table and that we deserve a retirement after we serve the economic machine of this country. Their addresses, telephone numbers and links to their contact section of their websites are all listed.



Principal
 Brian M. Goode, AIF®
 Financial Advisor
 2626 49th Drive
 Franksville, WI 53126
 262-835-9111
 goode.brian@principal.com
 www.goodeplanning.com



There's Still Time to Fund an IRA for 2024



You have until your tax return due date, excluding extensions, to contribute up to \$7,000 for 2024 (\$8,000 if you were age 50 or older on December 31, 2024) to all IRAs combined. For most taxpayers, the contribution deadline for 2024 is April 15, 2025.

The tax filing deadline is fast approaching, which means time is running out to fund an IRA for 2024. If you had earned income last year, you may be able to contribute up to \$7,000 for 2024 (\$8,000 for those age 50 or older by December 31, 2024) up until your tax return due date, excluding extensions. For most people, that date is Tuesday, April 15, 2025.

You can contribute to a traditional IRA, a Roth IRA, or both. Total contributions cannot exceed the annual limit or 100% of your taxable compensation, whichever is less. You may also be able to contribute to an IRA for your spouse for 2024, even if your spouse had no earned income.

Traditional IRA contributions may be deductible

If you and your spouse were not covered by a work-based retirement plan in 2024, your traditional IRA contributions are fully tax deductible. If you were covered by a work-based plan, you can take a full deduction if you're single and had a 2024 modified adjusted gross income (MAGI) of \$77,000 or less, or married filing jointly with a 2024 MAGI of \$123,000 or less. You may be able to take a partial deduction if your MAGI fell within the following limits.

2024 income ranges for a partial deduction for traditional IRA contributions		
Covered by a work-based plan and filing as:	Partial deduction if your MAGI is between:	No deduction if your MAGI is:
Single/Head of household	\$77,000 and \$87,000	\$87,000 or more
Married filing jointly	\$123,000 and \$143,000	\$143,000 or more
Married filing separately	\$0 and \$10,000	\$10,000 or more

If you were not covered by a work-based plan but your spouse was, you can take a full deduction if your joint MAGI was \$230,000 or less, a partial deduction if your MAGI fell between \$230,000 and \$240,000, and no deduction if your MAGI was \$240,000 or more.

Consider Roth IRAs as an alternative

If you can't make a deductible traditional IRA contribution, a Roth IRA may be a more appropriate alternative. Although Roth IRA contributions are not tax-deductible, qualified distributions are tax-free. You can make a full Roth IRA contribution for 2024 if you're single and your MAGI was \$146,000 or less, or married filing jointly with a 2024 MAGI of \$230,000 or less. Partial contributions may be allowed if your MAGI fell within the following limits.

2024 income ranges for partial contributions to a Roth IRA		
	Partial contributions are allowed if your MAGI is from:	You cannot contribute if your MAGI is:
Single/Head of household	\$146,000 to \$160,999	\$161,000 or more
Married filing jointly	\$230,000 to \$239,999	\$240,000 or more
Married filing separately	\$0 to \$9,999	\$10,000 or more



Making a last-minute contribution to an IRA may help you reduce your 2024 tax bill. In addition to the potential for tax-deductible contributions to a traditional IRA, you may also be able to claim the Saver's Credit for contributions to a traditional or Roth IRA, depending on your income. For more information, visit irs.gov.

Tip: If you can't make an annual contribution to a Roth IRA because of the income limits, there is a workaround. You can make a nondeductible contribution to a traditional IRA and then immediately convert that traditional IRA contribution to a Roth IRA. (This is sometimes called a backdoor Roth IRA.) Keep in mind, however, that you'll need to aggregate all traditional IRAs and SEP/SIMPLE IRAs you own — other than IRAs you've inherited — when you calculate the taxable portion of your conversion.

A qualified distribution from a Roth IRA is one made after the account is held for at least five years and the account owner reaches age 59½, becomes disabled, or dies. If you make an initial contribution — no matter how small — to a Roth IRA for 2024 by your tax return due date, and it is your first Roth IRA contribution, your five-year holding period starts on January 1, 2024.

If you do not want to receive e-mails of this nature from Brian Goode in the future, please call 262-835-9111 or e-mail goode.brian@principal.com to have your e-mail address removed from my commercial e-mail address list.

Insurance products issued by Principal National Life Insurance Company (except in NY), Principal Life Insurance Company®, and the companies available through the Preferred Product Network, Inc. Securities and advisory products offered through Principal Securities, Inc., [Member SIPC](#). Referenced companies are members of the Principal Financial Group®, Des Moines, IA 50392. Brian Goode, Principal National and Principal Life Financial Representative, Principal Securities Registered Representative, Financial Advisor, and a member of the Principal® Financial Network. Union Financial, Inc. is not an affiliate of any company of the Principal Financial Group®.

AIF® (Accredited Investment Fiduciary®) is an educational designation only, obtained by the holder by completing the requisite coursework. The AIF Designation does not mean the holder is acting in a fiduciary capacity.

The material provided does not necessarily reflect the views or opinions of Principal Financial Group®. Broadridge is not affiliated with any company of the Principal Financial Group®. Principal Financial Group® does not endorse the commentary, opinions or views of the article. This material should be considered general information and should not be used as the primary basis for a financial decision. It is provided with the understanding that the member companies of the Principal Financial Group® are not rendering legal, accounting, or tax advice.

Contributed by Brian Goode / Union Financial / 1-262-835-9111 / goode.brian@principal.com



Seniors Corner: 71 percent of Trump Voters Oppose Medicaid Cuts: Poll

From thehill.com

Most President Trump voters say they oppose any cuts to Medicaid as Republican lawmakers wrestle with how to reach up to \$2 trillion in budget cuts through their reconciliation bill, a poll released Monday found.

The poll from Hart Research conducted for the non-profit Families Over Billionaires, which advocates in opposition to tax cuts for the wealthy, found 71 percent of voters who backed Trump said cutting Medicaid would be unacceptable. Voters overall were even more opposed to it, with 82 percent saying so.

Six in 10 Trump voters also said cutting food and nutrition programs would be unacceptable.

Medicaid has increasingly become a hot topic on Capitol Hill as the GOP seeks to advance its budget proposal to pass Trump’s legislative agenda.

The House Rules Committee voted along party lines Monday to advance the budget resolution, allowing it to move to the floor for debate and a vote.

The resolution would direct the House Energy and Commerce Committee to find at least \$880 billion in budget cuts, raising concerns among Democrats and moderate Republicans that it could mean cuts to Medicaid, which provides health care coverage to more than 70 million people, most of them poor and half of them children.

The committee has jurisdiction over the program, and many lawmakers believe making cuts to it, along with food assistance programs, is the only way to reduce spending.

This has forced House GOP leadership to work to win over the more moderate members of the conference who have expressed concern about the possibility.

Meanwhile, House Republican leaders are downplaying the potential cuts to Medicaid benefits, saying changes to the program would consist of work requirements and reducing fraud, not changes like lowering the federal match for states that have expanded Medicaid.

“Look, Medicaid has never been on the chopping block,” House Speaker Mike Johnson (R-La.) said during a press conference. “If you eliminate fraud, waste and abuse in Medicaid, you’ve got a huge amount of money that you can spend on real priorities for the country.”

Trump has vowed not to touch Medicaid as part of the cuts but has included a caveat for finding waste or abuse within the program.

The poll was conducted Feb. 12-16 among 1,011 voters.

Upcoming Events and Important Dates:

<p>Milwaukee Area Labor Council Delegate Meeting Wednesday, March 5th at 6:30 PM Milwaukee Labor Temple 633 S. Hawley Rd. Milwaukee, WI</p>	<p>District 10 Business Meeting Monday, March 10th At 7 PM Satellite Meeting @ Lodge 66 1650 S. 38th Street Milwaukee, WI</p>	<p>Lodge 66 Business Meeting Tuesday, March 11th at 7 PM Local Lodge 66 1650 S. 38th Street Milwaukee, WI</p>	<p>Deadline to submit articles for the next Badger Lodge News is March 22nd Submit articles by email: lodge66@gmail.com</p>
--	--	--	--

District 10 Office Directory:

107 Warren St. Suite 2 Beaver Dam,
WI 53916

Call 920-219-4919 followed by the ex-
tension for you Business Rep

- Alex Hoekstra 1
- Nick Bednarek 3
- Jeremy Terlisner 6
- Todd Humleker 5
- Joe Terlisner 7
- Hunter Scott 8
- Justin Bader 9

Officers of Local Lodge 66

Machinists Union

- President Mike Oettel
- Vice President Mike Stark
- Recording Secretary .. Jon Zancanaro
- Secretary/Treasurer ... Kenny Mullan
- Conductor/Sentinel
Adam Duedenhoef
- Trustees: Don Aiello, Thomas Schaab
and Liam Maltz
- Communicator Jon Zancanaro
- Educator Mike Stark
- Editor Jon Zancanaro

The views and opinions expressed by
the various writers in this publication
are their own and not necessarily those
of the editor, Lodge 66 Executive Board
or the Membership of Lodge 66. The
Editor reserves the right to publish,
edit or exclude publication of any arti-
cle submitted to the Badger Lodge
News. Any member may contribute
articles for publication by sending them
to United Lodge 66, 1650 S. 38th Street,
Milwaukee, WI 53215 or via e-mail to
lodge66@gmail.com.

Visit us on the web:

www.unitedlodge66.org

www.YouTube.com/badgerlodge

**Do you have any concerns, complaints or congratulations you would like to
bring up to those representing you in Government? Give them a call or send
them a note and let your voice be heard**

President Donald Trump (R)

1600 Pennsylvania Ave
Washington D.C. 20510
202-224-5323

<https://www.whitehouse.gov/contact/>

Senator Ron Johnson (R)

328 Hart Senate Office Building
Washington D.C. 20510
202-224-5323

[https://www.ronjohnson.senate.gov/
public/index.cfm/email-the-senator](https://www.ronjohnson.senate.gov/public/index.cfm/email-the-senator)

State Rep. Bryan Steil (R)

1st District of Wisconsin
1526 Longworth HOB
Washington D.C. 20515
202-225-3031

<https://steil.house.gov/contact>

State Rep. Gwen Moore (D)

Wisconsin State District 4
2252 Rayburn House Office Building
Washington D.C. 20515
202-225-4572

[https://gwenmoore.house.gov/
contact/](https://gwenmoore.house.gov/contact/)

State Rep. Glen Grothman (R)

Wisconsin State District 6
1211 Longworth H.O.B.
Washington D.C. 20515
202-225-2476

Governor Tony Evers (D)

115 East Capitol
Madison, WI 53707
608-266-1212

[Gov - Voice an Opinion: Wisconsin
Public Forms](#)

Senator Tammy Baldwin (D)

141 Hart Senate Office Building
Washington D.C. 20510
202-224-5653

[https://www.baldwin.senate.gov/
feedback](https://www.baldwin.senate.gov/feedback)

State Rep. Derrick Van Orden (R)

Wisconsin State District 3
1513 Longworth H.O.B.
Washington D.C. 20515
202-225-5506

<https://vanorden.house.gov/>

State Rep. Scott Fitzgerald (R)

Wisconsin State District 5
2444 Longworth H.O.B.
Washington D.C. 20515
202-225-5101

<https://fitzgerald.house.gov/contact>

State Rep. Tom Tiffany (R)

Wisconsin State District 7
451 Cannon HOB
Washington D.C. 20515
202-225-3365